

**SUMMARY OF ANALYSIS (SAMPLE ID: SA42561)**

<b>Testing Location:</b> Arkansas 232 S. Broadview St. Greenbrier, AR 72058 License: ADH 113	<b>Customer ID:</b> 2168 River Valley Relief MIPS 5601 Old Greenwood Rd Suite C Fort Smith, AR 72903 License: 00065C	<b>Order ID:</b> OR11877 <b>Lot Number:</b> M00065C13244844012 <b>Production Run:</b> E20251106FCCMTDV01	<b>Sample Type:</b> Primary <b>Matrix:</b> Concentrate <b>Mass:</b> 4ea <b>Date Collected:</b> 11/06/2025 <b>Date Received:</b> 11/06/2025
<b>Cultivar (Strain) or Sample Description:</b> Fizzy Cherry Cola Disposable Mini Tank 1g Vape			<b>Date Completed:</b> 11/10/2025

\*This page is simply a summary of the analysis performed. For analytical details, please consult the individual Certificate(s) of Analysis for each of the specific test(s) performed. All contaminant action levels are referenced from the State of Arkansas MMJ testing guidelines.  
\*Where provided, statements of conformity (e.g. Pass/Fail) are made in accordance with ILAC G8, Binary Statement for Simple Acceptance Rule (w=0, AL=TL).  
PASS: when the result is within the acceptance interval. FAIL: when the result is outside the acceptance interval

**Moisture Content (%)**

Not Tested

**Water Activity (aw)**

Not Tested

**PASS/FAIL**

**PASS**

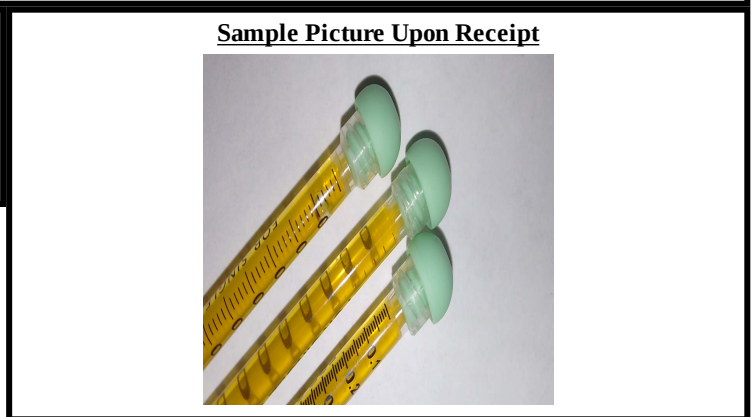
Moisture content/water activity action levels are referenced from the State of Arkansas MMJ testing guidelines.  
Moisture content levels less than 15% are recommended but the sample does not fail. Water activity levels must be less than 0.65aw.

<b>Cannabinoids (Top 3)</b>	<b>(%)</b>	<b>mg/g</b>
Δ9-THC	80.9	809
THCA	1.28	12.8
Δ8-THC	1.15	11.5
TOTAL CBD	0.000	0.000
TOTAL THC	82.0	820
TOTAL CANNABINOIDS	84.1	841

<b>Terpenes (Top 5)</b>	<b>(%)</b>	<b>ppm</b>
d-Limonene	2.64	26400
β-Caryophyllene	0.409	4090
β-Myrcene	0.319	3190
γ-Terpinene	0.243	2430
β-Pinene	0.181	1810
TOTAL TERPENES	5.07	50700

<b>Contaminants</b>	<b>PASS/FAIL</b>
Heavy Metals:	PASS
Microbiology:	PASS
Pesticides:	PASS
Residual Solvents:	PASS



Scan the QR code to verify results.

This information is provided as a service and makes no claims of efficacy and/or safety of this product. Results are applicable only for the sample(s) analyzed and for the specific analysis conducted. This report is for informational purposes only and should not be used to diagnose, treat, or prevent any medical-related symptoms. The statements and results herein have not been approved and/or endorsed by the FDA.

**REPORT OF LABORATORY ANALYSIS**

This report shall not be reproduced, except in full, without the written consent of Felling Analytical Services and Technology (F.A.S.T.), LLC

[www.FASTLaboratories.com](http://www.FASTLaboratories.com)

F.A.S.T. Personnel perform sampling following the Sampling SOP (SOP-02).

*Kyle W. Felling*  
Kyle W. Felling, Ph.D.  
Laboratory Director



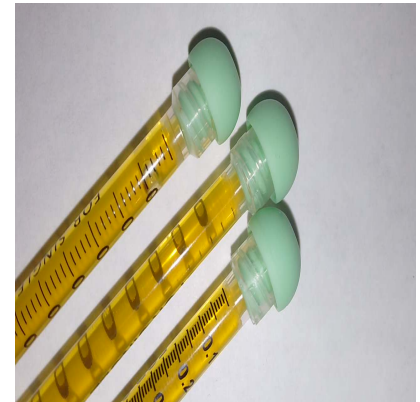
**CERTIFICATE OF ANALYSIS (SAMPLE ID: SA42561)**

<b>Testing Location:</b> Arkansas 232 S. Broadview St. Greenbrier, AR 72058 License: ADH 113	<b>Customer ID:</b> 2168 River Valley Relief MIPS 5601 Old Greenwood Rd Suite C Fort Smith, AR 72903 License: 00065C	<b>Order ID:</b> OR11877 <b>Lot Number:</b> M00065C13244844012 <b>Production Run:</b> E20251106FCCMTDV01	<b>Sample Type:</b> Primary <b>Matrix:</b> Concentrate <b>Mass:</b> 4ea <b>Date Collected:</b> 11/06/2025 <b>Date Received:</b> 11/06/2025
<b>Cultivar (Strain) or Sample Description:</b> Fizzy Cherry Cola Disposable Mini Tank 1g Vape			<b>Date Completed:</b> 11/10/2025

**CANNABINOID (POTENCY) PROFILE (SOP: SOP-CANN-001)**

**Analysis Date/Time:** 11/07/2025 1454      **Method:** HPLC/DAD      **Moisture Content (%):** -  
**Analyst:** PW      **Instrument:** Agilent 1100      **Water Activity (aw):** -

<u>Cannabinoid</u>	<u>Result (%)</u>	<u>Result (mg/g)</u>	<u>LOD (mg/g)</u>	<u>LOQ (mg/g)</u>	<u>Result (mg/mL)</u>	<u>Per Serving (mg)</u>	<u>Per Unit (mg)</u>
CBC	ND	ND	0.100	0.233	-	0.000	0.000
CBCA	ND	ND	0.311	0.725	-	0.000	0.000
CBD	ND	ND	0.705	1.65	-	0.000	0.000
CBDA	ND	ND	0.260	0.606	-	0.000	0.000
CBDV	ND	ND	0.113	0.264	-	0.000	0.000
CBDVA	ND	ND	0.302	0.705	-	0.000	0.000
CBG	0.308	3.08	0.458	1.07	-	3.08	3.08
CBGA	ND	ND	0.649	0.766	-	0.000	0.000
CBL	ND	ND	0.529	1.24	-	0.000	0.000
CBN	0.231	2.31	0.243	0.568	-	2.31	2.31
CBNA	ND	ND	0.262	0.612	-	0.000	0.000
Δ9-THC	80.9	809	0.291	0.679	-	809	809
Δ8-THC	1.15	11.5	0.455	1.06	-	11.5	11.5
THCA	1.28	12.8	0.158	0.369	-	12.8	12.8
THCV	0.246	2.46	0.379	0.884	-	2.46	2.46
THCVA	ND	ND	0.121	0.282	-	0.000	0.000
<b>TOTAL</b>	<b>84.1</b>	<b>841</b>				<b>841</b>	<b>841</b>
<b>TOTAL CBC</b>	<b>0.000</b>	<b>0.000</b>				<b>0.000</b>	<b>0.000</b>
<b>TOTAL CBD</b>	<b>0.000</b>	<b>0.000</b>				<b>0.000</b>	<b>0.000</b>
<b>TOTAL CBDV</b>	<b>0.000</b>	<b>0.000</b>				<b>0.000</b>	<b>0.000</b>
<b>TOTAL CBG</b>	<b>0.308</b>	<b>3.08</b>				<b>3.08</b>	<b>3.08</b>
<b>TOTAL CBN</b>	<b>0.231</b>	<b>2.31</b>				<b>2.31</b>	<b>2.31</b>
<b>TOTAL THC</b>	<b>82.0</b>	<b>820</b>				<b>820</b>	<b>820</b>
<b>TOTAL THCV</b>	<b>0.246</b>	<b>2.46</b>				<b>2.46</b>	<b>2.46</b>



**SERVING MASS (g):** 1.00  
**SERVINGS/UNIT:** 1

"-" Not reported for this sample.

*Deviations from standard operating procedure:*  
None

*Recoveries for all analyte standards:* 90-110%  
*Replicate Uncertainties:* <5% RSD, <20% RPD  
*Sample/Reagent Blanks:* <RL for all analytes

Values for plant matter are adjusted for moisture content.  
Dry percent = Wet percent / (1-(Moisture Content/100))

Total CBC = (CBCA x 0.877) + CBC  
Total CBD = (CBDA x 0.877) + CBD  
Total CBDV = (CBDVA x 0.867) + CBDV  
Total CBG = (CBGA x 0.878) + CBG  
Total CBN = (CBNA x 0.876) + CBN  
Total THC = (THCA x 0.877) + Δ9-THC  
Total THCV = (THCVA x 0.867) + THCVA

Percentage results are reported by mass.

mg/g results are reported as mass component per mass material.

*Abbreviations:* DAD - Diode Array Detector, HPLC - High Pressure Liquid Chromatography, RL - Reporting Limit, RPD - Relative Percent Difference, RSD - Relative Standard Deviation, DET - Detected (less than LOQ), LOD - Limit of Detection, LOQ - Limit of Quantitation, ND - Not Detected (less than LOD)

This information is provided as a service and makes no claims of efficacy and/or safety of this product. Results are applicable only for the sample(s) analyzed and for the specific analysis conducted. This report is for informational purposes only and should not be used to diagnose, treat, or prevent any medical-related symptoms.

The statements and results herein have not been approved and/or endorsed by the FDA.

**REPORT OF LABORATORY ANALYSIS**

This report shall not be reproduced, except in full, without the written consent of Felling Analytical Services and Technology (F.A.S.T.), LLC

[www.FASTLaboratories.com](http://www.FASTLaboratories.com)

F.A.S.T. Personnel perform sampling following the Sampling SOP (SOP-02).

*Kyle W. Felling*  
Kyle W. Felling, Ph.D.  
Laboratory Director



**CERTIFICATE OF ANALYSIS (SAMPLE ID: SA42561)**

<b>Testing Location:</b> Arkansas 232 S. Broadview St. Greenbrier, AR 72058 License: ADH 113	<b>Customer ID:</b> 2168 River Valley Relief MIPS 5601 Old Greenwood Rd Suite C Fort Smith, AR 72903 License: 00065C	<b>Order ID:</b> OR11877 <b>Lot Number:</b> M00065C13244844012 <b>Production Run:</b> E20251106FCCMTDV01	<b>Sample Type:</b> Primary <b>Matrix:</b> Concentrate <b>Mass:</b> 4ea <b>Date Collected:</b> 11/06/2025 <b>Date Received:</b> 11/06/2025
--	--	--	--

**Cultivar (Strain) or Sample Description:** Fizzy Cherry Cola Disposable Mini Tank 1g Vape **Date Completed:** 11/10/2025

**TERPENOID PROFILE**

**Analysis Date/Time:** 11/08/2025 0014  
**Analyst:** KF

**Method:** GC/MS  
**Instrument:** Agilent 7890/5975

**Deviations from SOP:**  
None

<u>Terpene</u>	<u>Result (ppm)</u>	<u>Result (%)</u>	<u>Terpene</u>	<u>Result (ppm)</u>	<u>Result (%)</u>
α-Bisabolol	495	0.0495	d-Limonene	26400	2.64
L-Borneol	ND	-	Linalool	878	0.0878
D-Borneol	80.7	0.00807	l-Menthone	<LOQ	-
Camphene	170	0.0170	Menthol	140	0.0140
Camphor	44.1	0.00441	β-Myrcene	3190	0.319
δ-3-Carene	92.1	0.00921	Nerol	90.9	0.00909
Carvacrol	ND	-	cis-Nerolidol	ND	-
Carvone	ND	-	trans-Nerolidol	222	0.0222
β-Caryophyllene	4090	0.409	Nootkatone	ND	-
Caryophyllene oxide	98.9	0.00989	cis-β-Ocimene	81.8	0.00818
Cedrene	<LOQ	-	trans-β-Ocimene	ND	-
Cedrol	52.1	0.00521	Octyl acetate	<LOQ	-
cis-Citral	264	0.0264	α-Phellandrene	92.1	0.00921
trans-Citral	206	0.0206	Phytane	49.1	0.00491
Citronellol	68.7	0.00687	α-Pinene	1260	0.126
o-Cymene	ND	-	β-Pinene	1810	0.181
m-Cymene	ND	-	Piperitone	ND	-
p-Cymene	298	0.0298	Pulegone	ND	-
Eucalyptol	108	0.0108	Sabinene	1060	0.106
trans-β-Farnesene	638	0.0638	Sabinene hydrate	59.7	0.00597
Farnesol 1	1410	0.141	Safranal	ND	-
Farnesol 2	ND	-	Squalene	197	0.0197
Fenchone	<LOQ	-	Terpinen-4-ol	182	0.0182
Fenchyl alcohol	332	0.0332	α-Terpinene	292	0.0292
Geraniol	77.3	0.00773	γ-Terpinene	2430	0.243
Geranyl acetate	379	0.0379	α-Terpineol	914	0.0914
Guaiol	95.6	0.00956	Terpinolene	1090	0.109
α-Humulene	1020	0.102	α-Thujone	119	0.0119
Isoborneol	<LOQ	-	Thymol	ND	-
Isobornyl acetate	ND	-	Valencene	128	0.0128
d-Isomenthone	<LOQ	-	d-Valerolactam	ND	-
Isopulegol	ND	-	Verbenone	ND	-



*Abbreviations:* GC - Gas Chromatography, MS - Mass Spectrometry, RL - Reporting Limit

*Abbreviations:* ND - Not Detected, LOD - Limit of Detection, LOQ - Limit of Quantitation

This information is provided as a service and makes no claims of efficacy and/or safety of this product.

Results are applicable only for the sample(s) analyzed and for the specific analysis conducted.

This report is for informational purposes only and should not be used to diagnose, treat, or prevent any medical-related symptoms.

The statements and results herein have not been approved and/or endorsed by the FDA.

"-" Not detected above LOD.

**TOTAL** (ppm) 50700 (%) 5.07 **Reporting Limit (ppm):** 43.9

**REPORT OF LABORATORY ANALYSIS**

This report shall not be reproduced, except in full, without the written consent of Felling Analytical Services and Technology (F.A.S.T.), LLC

[www.FASTLaboratories.com](http://www.FASTLaboratories.com)

F.A.S.T. Personnel perform sampling following the Sampling SOP (SOP-02).

*Kyle W. Felling*  
Kyle W. Felling, Ph.D.  
Laboratory Director



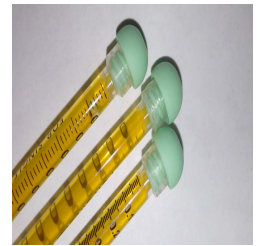
**CERTIFICATE OF ANALYSIS (SAMPLE ID: SA42561)**

<b>Testing Location:</b> Arkansas 232 S. Broadview St. Greenbrier, AR 72058 License: ADH 113	<b>Customer ID:</b> 2168 River Valley Relief MIPS 5601 Old Greenwood Rd Suite C Fort Smith, AR 72903 License: 00065C	<b>Order ID:</b> OR11877 <b>Lot Number:</b> M00065C13244844012 <b>Production Run:</b> E20251106FCCMTDV01	<b>Sample Type:</b> Primary <b>Matrix:</b> Concentrate <b>Mass:</b> 4ea <b>Date Collected:</b> 11/06/2025 <b>Date Received:</b> 11/06/2025
<b>Cultivar (Strain) or Sample Description:</b> Fizzy Cherry Cola Disposable Mini Tank 1g Vape			<b>Date Completed:</b> 11/10/2025

**RESIDUAL SOLVENT PROFILE (SOP: SOP-RS-001)**

<b>Analysis Date/Time:</b> 11/06/2025 2144	<b>Method:</b> HS/GC/MS	<b>Deviations from SOP:</b>
<b>Analyst:</b> KF	<b>Instrument:</b> Agilent 7890/5975	None

Solvent	Result (ppm)	LOD (ppm)	LOQ (ppm)	Action Level (ppm)	Solvent	Result (ppm)	LOD (ppm)	LOQ (ppm)	Action Level (ppm)
Acetone (67-64-1)	-	32.1	64.2	5000	n-Heptane (142-82-5)	-	32.1	64.2	5000
Acetonitrile (75-5-8)	-	32.1	64.2	410	n-Hexane (110-54-3)	-	11.2	22.5	290
Benzene (71-43-2)	-	0.321	0.642	2	Isobutane (75-28-5)	-	32.1	64.2	5000
n-Butane (106-97-2)	-	32.1	64.2	5000	Isopropanol (67-63-0)	-	32.1	64.2	5000
1-Butanol (71-36-3)	-	32.1	64.2	5000	Isopropyl acetate (108-21-4)	-	32.1	64.2	5000
2-Butanol (78-92-2)	-	32.1	64.2	5000	Isopropyl benzene (98-82-8)	-	3.21	6.42	70
2-Butanone (78-93-3)	-	32.1	64.2	5000	Methanol (67-56-1)	-	32.1	64.2	3000
Cyclohexane (110-82-7)	-	32.1	64.2	3880	2-Methylbutane (78-78-4)	-	32.1	64.2	5000
1,2-Dimethoxyethane (110-71-4)	-	3.21	6.42	100	Methylene chloride (75-9-2)	-	32.1	64.2	600
N,N-Dimethylacetamide (127-19-5)	-	32.1	64.2	1090	2-Methylpentane (107-83-5)	-	11.2	22.5	290
2,2-Dimethylbutane (75-83-2)	-	11.2	22.5	290	3-Methylpentane (96-10-0)	-	11.2	22.5	290
2,3-Dimethylbutane (79-29-8)	-	11.2	22.5	290	n-Pentane (109-66-0)	-	32.1	64.2	5000
N,N-Dimethylformamide (68-12-2)	-	32.1	64.2	880	1-Pentanol (71-41-0)	-	32.1	64.2	5000
Dimethylsulfoxide (67-68-5)	-	32.1	64.2	5000	n-Propane (74-98-6)	-	32.1	64.2	5000
1,4-Dioxane (123-91-1)	-	32.1	64.2	380	1-Propanol (71-23-8)	-	32.1	64.2	5000
Ethanol (64-17-5)	-	32.1	64.2	5000	Pyridine (110-86-1)	-	11.2	22.5	200
2-Ethoxyethanol (110-80-5)	-	11.2	22.5	160	Tetrahydrofuran (109-99-9)	-	32.1	64.2	720
Ethyl ether (60-29-7)	-	32.1	64.2	5000	Tetramethylene sulfone (126-33-0)	-	11.2	22.5	160
Ethyl acetate (141-78-6)	-	32.1	64.2	5000	Toluene (108-88-3)	-	32.1	64.2	890
Ethyl benzene (100-41-4)	-	32.1	64.2	2170	o-Xylene (95-47-6)	-	32.1	64.2	2170
Ethylene glycol (107-21-1)	-	32.1	64.2	620	m,p-Xylene (108-38-3 or 106-42-3)	-	32.1	64.2	2170
Ethylene oxide (75-21-8)	-	3.21	6.42	50	Xylenes* (1330-20-7)	-	43.3	86.7	2170



**Color Key**

RESULT < AL
RESULT > AL

"-" not detected above 1/2 Action Level

"\*" - o,m,p-Xylene and Ethylbenzene

Action levels are referenced from the State of Arkansas MMJ testing guidelines.

A value of "-" for the action level means that analyte is not currently regulated by the regulations referenced above.

Solvent	Synonym(s)	Solvent	Synonym(s)
Acetonitrile	Methyl Cyanide, ACN	Ethylene glycol	1,2-Ethanediol
1-Butanol	n-Butanol, Butyl Alcohol	Isobutane	2-Methylpropane
2-Butanol	sec-Butyl alcohol	Isopropanol	2-Propanol, IPA
2-Butanone	Methyl ethyl ketone, MEK	Isopropyl Acetate	Acetic acid isopropyl ester
1,2-Dimethoxyethane	Monoglyme	Methanol	Methyl alcohol
2,3-Dimethylbutane	Neohexane	2-Methylbutane	Isopentane
2,3-Dimethylbutane	Diisopropyl	Methylene chloride	Dichloromethane
N,N-Dimethylformamide	DMF	2-Methylpentane	Isohexane
Dimethylsulfoxide	DMSO	1-Pentanol	n-Amyl alcohol
2-Ethoxyethanol	Cellosolve, Ethyl glycol	1-Propanol	Propyl alcohol
Ethyl ether	Diethyl ether, Ether	Tetrahydrofuran	THF
Ethyl acetate	EtOAc	Tetramethylene sulfone	Sulfolane
Ethyl benzene	Phenylethane	Xylene	Dimethylbenzene

Abbreviations: HS-Headspace, GC-Gas Chromatography, MS-Mass Spectrometry, RL-Reporting Limit, AL-Action Level, CAS-Chemical Abstract Services, LOD - Limit of Detection, LOQ - Limit of Quantification

Disclaimer: This information is provided as a service and makes no claims of efficacy and/or safety of this product. Results are applicable only for the sample(s) analyzed and for the specific analysis conducted. This report is for informational purposes only and should not be used to diagnose, treat, or prevent any medical-related symptoms. The statements and results herein have not been approved and/or endorsed by the FDA.

**REPORT OF LABORATORY ANALYSIS**

This report shall not be reproduced, except in full, without the written consent of Felling Analytical Services and Technology (F.A.S.T.), LLC

[www.FASTLlaboratories.com](http://www.FASTLlaboratories.com)

F.A.S.T. Personnel perform sampling following the Sampling SOP (SOP-02).

*Kyle W. Felling*  
Kyle W. Felling, Ph.D.  
Laboratory Director



**CERTIFICATE OF ANALYSIS (SAMPLE ID: SA42561)**

<b>Testing Location:</b> Arkansas 232 S. Broadview St. Greenbrier, AR 72058 License: ADH 113	<b>Customer ID:</b> 2168 River Valley Relief MIPS 5601 Old Greenwood Rd Suite C Fort Smith, AR 72903 License: 00065C	<b>Order ID:</b> OR11877 <b>Lot Number:</b> M00065C13244844012 <b>Production Run:</b> E20251106FCCMTDV01	<b>Sample Type:</b> Primary <b>Matrix:</b> Concentrate <b>Mass:</b> 4ea <b>Date Collected:</b> 11/06/2025 <b>Date Received:</b> 11/06/2025
--	--	--	--

**Cultivar (Strain) or Sample Description:** Fizzy Cherry Cola Disposable Mini Tank 1g Vape **Date Completed:** 11/10/2025

**PESTICIDES PROFILE (SOP: SOP-PEST-001)**

**Analysis Date/Time:** 11/07/2025 1502  
**Analyst:** KF

**Method:** LC/MS/MS  
**Instrument:** Shimadzu LC-8050

**Deviations from SOP:**  
None

Pesticide	Result (ppm)	LOD (ppm)	LOQ (ppm)	Action Level (ppm)	Pesticide	Result (ppm)	LOD (ppm)	LOQ (ppm)	Action Level (ppm)
Abamectin (71751-41-2)	-	0.0437	0.349	0.5	Kresoxim-methyl (143390-89-0)	-	0.0437	0.349	0.4
Acephate (30560-19-1)	-	0.0437	0.349	0.4	Malathion (121-75-5)	-	0.0437	0.349	0.2
Acequinocyl (57960-19-7)	-	0.0437	0.349	2	Metalaxyl (57837-19-1)	-	0.0437	0.349	0.2
Acetamiprid (135410-20-7)	-	0.0437	0.349	0.2	Methiocarb (2032-65-7)	-	0.0437	0.349	0.2
Aldicarb (116-06-3)	-	0.0437	0.349	0.4	Methomyl (16752-77-5)	-	0.0437	0.349	0.4
Azoxystrobin (131860-33-8)	-	0.0437	0.349	0.2	Methyl parathion (298-0-0)	-	0.0437	0.349	0.2
Bifenazate (149877-41-8)	-	0.0437	0.349	0.2	MGK 264 (113-48-4)	-	0.0437	0.349	0.2
Bifenthrin (82657-04-3)	-	0.0437	0.349	0.2	Myclobutanil (88671-89-0)	-	0.0437	0.349	0.2
Boscalid (188425-85-6)	-	0.0437	0.349	0.4	Naled (300-76-5)	-	0.0437	0.349	0.5
Carbaryl (63-25-2)	-	0.0437	0.349	0.2	Oxamyl (23135-22-0)	-	0.0437	0.349	1
Carbofuran (1563-66-2)	-	0.0437	0.349	0.2	Pacllobutrazol (76738-62-0)	-	0.0437	0.349	0.4
Chlorantraniliprole (800008-45-7)	-	0.0437	0.349	0.2	Permethrins (52645-53-1)	-	0.0437	0.349	0.2
Chlorfenapyr (122453-73-0)	-	0.0437	0.349	1	Phosmet (732-11-6)	-	0.0437	0.349	0.2
Chlorpyrifos (2921-88-2)	-	0.0437	0.349	0.2	Piperonyl butoxide (51-03-6)	-	0.0437	0.349	2
Clofentezine (74115-24-5)	-	0.0437	0.349	0.2	Prallethrins (2331-36-9)	-	0.0437	0.349	0.2
Cyfluthrin (68359-37-5)	-	0.0437	0.349	1	Propiconazole (60207-90-1))	-	0.0437	0.349	0.4
Cypermethrin (52315-07-8)	-	0.0437	0.349	1	Propoxur (114-26-1)	-	0.0437	0.349	0.2
Daminozide (1596-84-5)	-	0.0437	0.349	1	Pyrethrins (8003-34-7)	-	0.0437	0.349	1
DDVP (62-73-7)	-	0.0437	0.349	0.1	Pyridaben (96489-71-3)	-	0.0437	0.349	0.2
Diazinon (333-41-5)	-	0.0437	0.349	0.2	Spinosad (168316-95-8)	-	0.0437	0.349	0.2
Dimethoate (60-51-5)	-	0.0437	0.349	0.2	Spiromesifen (283594-90-1)	-	0.0437	0.349	0.2
Ethoprophos (13194-48-4)	-	0.0437	0.349	0.2	Spirotetramat (203313-25-1)	-	0.0437	0.349	0.2
Etofenprox (80844-07-1)	-	0.0437	0.349	0.4	Spiroxamine (118134-30-8)	-	0.0437	0.349	0.4
Etoxazole (153233-91-1)	-	0.0437	0.349	0.2	Tebuconazole (80443-41-0)	-	0.0437	0.349	0.4
Fenoxycarb (72490-01-8)	-	0.0437	0.349	0.2	Thiacloprid (111988-49-9)	-	0.0437	0.349	0.2
(E)-Fenpyroximate (134098-61-6)	-	0.0437	0.349	0.4	Thiamethoxam (153719-23-4)	-	0.0437	0.349	0.2
Fipronil (120068-37-3)	-	0.0437	0.349	0.4	Trifloxystrobin (141517-21-7)	-	0.0437	0.349	0.2
Fonicamid (158062-67-0)	-	0.0437	0.349	1					
Fludioxinil (131341-86-1)	-	0.0437	0.349	0.4					
Hexythiazox (78587-05-0)	-	0.0437	0.349	1					
Imazalil (35554-44-0)	-	0.0437	0.349	0.2					
Imidacloprid (138261-41-3)	-	0.0437	0.349	0.4					



**Color Key**

RESULT < AL  
RESULT > AL

"DET" detected less than LOQ  
"- " not detected above LOD  
Permethrins measured as the cumulative residue of the *cis*- and *trans*- permethrin isomers.  
Pyrethrins measured as the cumulative residue of the pyrethrin I, cinerin I, and jasmolin I isomers.  
Action levels are referenced from the State of Arkansas MMJ testing guidelines.  
A value of "-" for the action level means that analyte is not currently regulated by the regulations referenced above.  
*Disclaimer:* This information is provided as a service and makes no claims of efficacy and/or safety of this product. Results are applicable only for the sample(s) analyzed and for the specific analysis conducted. This report is for informational purposes only and should not be used to diagnose, treat, or prevent any medical-related symptoms. The statements and results herein have not been approved and/or endorsed by the FDA.

Abbreviations: LC - Liquid Chromatography, MS - Mass Spectrometry, RL - Reporting Limit, AL - Action Level, CAS - Chemical Abstract Services, LOD - Limit of Detection, LOQ - Limit of Quantification

Pesticide	Synonym(s)	Pesticide	Synonym(s)	Pesticide	Synonym(s)
Cyfluthrin	Baythroid	Myclobutanil	Sythane	Propiconazole	Tilt
DDVP	Dichlorvos	Naled	Dibrom	Propoxur	Baygon
Ethoprophos	Prophos	Phosmet	Imidan		

**REPORT OF LABORATORY ANALYSIS**

This report shall not be reproduced, except in full, without the written consent of Felling Analytical Services and Technology (F.A.S.T.), LLC

[www.FASTLaboratories.com](http://www.FASTLaboratories.com)

F.A.S.T. Personnel perform sampling following the Sampling SOP (SOP-02).

*Kyle W. Felling*  
Kyle W. Felling, Ph.D.  
Laboratory Director



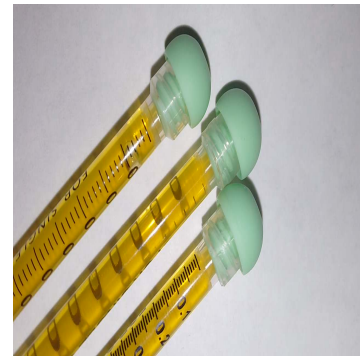
**CERTIFICATE OF ANALYSIS (SAMPLE ID: SA42561)**

<b>Testing Location:</b> Arkansas 232 S. Broadview St. Greenbrier, AR 72058 License: ADH 113	<b>Customer ID:</b> 2168 River Valley Relief MIPS 5601 Old Greenwood Rd Suite C Fort Smith, AR 72903 License: 00065C	<b>Order ID:</b> OR11877 <b>Lot Number:</b> M00065C13244844012 <b>Production Run:</b> E20251106FCCMTDV01	<b>Sample Type:</b> Primary <b>Matrix:</b> Concentrate <b>Mass:</b> 4ea <b>Date Collected:</b> 11/06/2025 <b>Date Received:</b> 11/06/2025
<b>Cultivar (Strain) or Sample Description:</b> Fizzy Cherry Cola Disposable Mini Tank 1g Vape			<b>Date Completed:</b> 11/10/2025

**HEAVY METAL PROFILE (SOP: SOP-ICP-200.6)**

**Analysis Date/Time:** 11/09/2025 1920      **Method:** ICP/MS      **Deviations from SOP:** None  
**Analyst:** KF      **Instrument:** Agilent 7700x

<u>Heavy Metal</u>	<u>Result (ppb)</u>	<u>LOD (ppb)</u>	<u>LOQ (ppb)</u>	<u>Action Level (ppb)</u>
Arsenic (As)	ND	56.8	89.9	200
Cadmium (Cd)	ND	56.8	89.9	200
Lead (Pb)	ND	56.8	89.9	500
Mercury (Hg)	ND	56.8	89.9	100



Abbreviations: ICP - Inductively-Coupled Plasma, MS - Mass Spectrometry,  
 RL - Reporting Limit, AL - Action Level, LOD - Limit of Detection, LOQ - Limit of Quantitation

**Color Key**

RESULT < AL
RESULT > AL

"DET" detected less than LOQ

"ND" not detected above LOD

Reporting limit is 1/2 the action level of each analyte.

Action levels for heavy metals are referenced from the State of Arkansas MMJ testing guidelines.

*Disclaimer:* This information is provided as a service and makes no claims of efficacy and/or safety of this product. Results are applicable only for the sample(s) analyzed and for the specific analysis conducted. This report is for informational purposes only and should not be used to diagnose, treat, or prevent any medical-related symptoms. The statements and results herein have not been approved and/or endorsed by the FDA.

**REPORT OF LABORATORY ANALYSIS**

This report shall not be reproduced, except in full, without the written consent of  
 Felling Analytical Services and Technology (F.A.S.T.), LLC

[www.FASTLaboratories.com](http://www.FASTLaboratories.com)

F.A.S.T. Personnel perform sampling following the Sampling SOP (SOP-02).

*Kyle W. Felling*  
 Kyle W. Felling, Ph.D.  
 Laboratory Director



**CERTIFICATE OF ANALYSIS (SAMPLE ID: SA42561)**

<b>Testing Location:</b> Arkansas 232 S. Broadview St. Greenbrier, AR 72058 -	<b>Customer ID:</b> 2168 River Valley Relief MIPS 5601 Old Greenwood Rd Suite C Fort Smith, AR 72903 License: 00065C	<b>Sample ID:</b> SA42561 <b>Lot Number:</b> M00065C13244844012 <b>Production Run:</b> E20251106FCCMTDV01	<b>Sample Type:</b> Primary <b>Matrix:</b> Concentrate <b>Mass:</b> 4ea <b>Date Collected:</b> 11/06/2025 <b>Date Received:</b> 11/06/2025
<b>Cultivar (Strain) or Sample Description:</b> Fizzy Cherry Cola Disposable Mini Tank 1g Vape			<b>Date Completed:</b> 11/10/2025

**MICROBIOLOGICAL PROFILE (SOP: SOP-Micro-001)**

**Analysis Date/Time:** 11/07/2025 1243      **Method:** Hardy Diagnostics CompactDry      **Deviations from SOP:**  
**Analyst:** PW      **Instrument:** Thermo Incubator      None

<u>Bacteria/Microbe</u>	<u>Result (CFU/g)</u>	<u>Action Level (CFU/g)</u>
Aerobic Plate Count	NT	-
Coliforms, Total	Absent	1
Escherichia Coli (E. Coli)	Absent	100
Mold/Yeast	NT	-
Pseudomonas aeruginosa	NT	-
Salmonella spp.	NT	-
Staphylococcus aureus	NT	-



*Abbreviations:* EC - Escherichia Coli, CFU - Colony-Forming Unit, RL - Reporting Limit, AL - Action Level, TNTC - Too Numerous To Count, NT - Not Tested  
Absent - Not Detected Above RL, Present - Detected Above RL

**Color Key**

**RESULT < AL**

**RESULT > AL**

**Reporting Limit (CFU/g)**  
1

Action levels for microbiology are referenced from the State of Arkansas MMJ testing guidelines.  
A value of "-" for the action level means that analyte is not currently regulated by the regulations referenced above.

*Disclaimer:* This information is provided as a service and makes no claims of efficacy and/or safety of this product. Results are applicable only for the sample(s) analyzed and for the specific analysis conducted. This report is for informational purposes only and should not be used to diagnose, treat, or prevent any medical-related symptoms. The statements and results herein have not been approved and/or endorsed by the FDA.

**REPORT OF LABORATORY ANALYSIS**

This report shall not be reproduced, except in full, without the written consent of  
Felling Analytical Services and Technology (F.A.S.T.), LLC

[www.FASTLaboratories.com](http://www.FASTLaboratories.com)

F.A.S.T. Personnel perform sampling following the Sampling SOP (SOP-02).

*Kyle W. Felling*  
Kyle W. Felling, Ph.D.  
Laboratory Director

